

# *merten*

PRODUCT RANGE OVERVIEW

## A WIDE ARRAY OF FUNCTIONS AND DESIGNS





# WHAT IQ LEVEL CAN A BUILDING HAVE?



## MERTEN INTELLIGENT BUILDING SYSTEMS – BETTER THAN EVER

People who are planning to construct or modernise a building want one thing above all: to have their needs for comfort, safety and attractive architecture met under one roof. And all that, of course, at the lowest possible costs. Regardless of whether it is a commercial or private building project.

Sooner or later, the question of electrical installations comes up. Nowadays, it is not just a question of where to put the light and electric outlets. After all, the latest innovations in intelligent building technology open up a whole new range of possibilities and applications. These include flexible, wireless control solutions for conversions and renovations, automatic blind control, and central switching functions. Just a few of the many examples.

Merten is a trailblazer for such intelligent technologies. Numerous national and international design awards show that Merten products succeed in combining intelligence and visual appeal. You can see this for yourself on the next few pages. And the Merten CD, which you will find on page 28, shows you how Merten can make your life at home and work more secure, comfortable, flexible and efficient. If you have any questions, your electrical installer is on hand to offer advice and practical support.

Have fun looking through the brochure and the CD.



## SYSTEM M

# THE NEW ARRAY OF SURFACES

### THE ELEGANT APPEARANCE OF SYSTEM M SWITCHES, WITH THREE DIFFERENT SURFACES TO CHOOSE FROM:

- Extra-glossy surface made of shatter-proof Thermoplastic
- Classymatt surface made of shatter-proof Thermoplastic
- Glossy surface made of extra scratch-proof Duroplastic



#### Thermoplastic brilliant

Extra-glossy surface made of shatter-proof Thermoplastic – particularly easy to clean.

##### Inserts/colours:

- White, glossy
- Polar white, glossy
- Active white, glossy

##### Frame design:

- M-SMART
- 1-M
- ATELIER-M
- M-PLAN
- M-PLAN II



#### Thermoplastic classymatt

Classymatt surface made of shatter-proof Thermoplastic.

##### Inserts/colours:

- White
- Polar white
- Anthracite
- Aluminium

##### Frame design:

- M-SMART
- M-ARC
- M-STAR
- M-PLAN
- M-PLAN II



#### Duroplastic, extra scratch-proof

Glossy surface made of extra scratch-proof Duroplastic.

##### Inserts/colours:

- White
- Polar white

##### Frame design:

- M-SMART



#### **Active white, Thermoplastic brilliant**

Active white offers long-term protection from germs and bacteria.

Whether in hotels, restaurants, airports, schools, kindergartens, industrial kitchens or hospitals – anywhere where hygiene is particularly important, Thermoplastic active white is the ideal surface. Natural silver ions in the thermoplastic material have an antibacterial effect and therefore protect against surface-borne infection. Many clinical studies have shown that Thermoplastic active white eradicates bacteria within 24 hours.

Similar to RAL 9016, the active white colour is a fresh alternative to the existing white tones. The glossy plastic surface can be easily wiped free of dirt.

#### **Inserts/colours:**

- Active white, glossy

#### **Frame design:**

- M-SMART
- 1-M
- ATELIER-M
- M-PLAN
- M-PLAN II



DESIGN **PLUS**

# SOCKET-OUTLETS, ANTENNA SOCKET-OUTLETS AND MULTIMEDIA CONNECTIONS WITHOUT THEM, YOU'RE OUT OF LUCK

## IT GOES WITHOUT SAYING—NO HOUSE SHOULD BE WITHOUT THESE SOCKET-OUTLETS.

But more than just supplying power to electrical appliances, they can also provide critical protective functions. On this page, we'll show you the real power of Merten socket-outlets.



### **SCHUKO® socket-outlets**

Merten SCHUKO® socket-outlets – a combination of maximum safety and reliable operation you can count on. A range of different models guarantees that these basic socket-outlets will match your style of living. To ensure smooth sailing later on, make sure you plan for an adequate number of socket-outlets right from the outset.



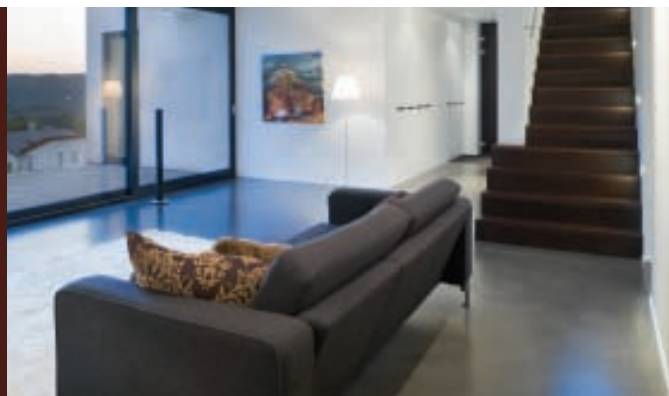
### **SCHUKO® socket-outlets with increased protection against accidental contact**

Kids love to play! Unfortunately, even with potential hazards. To ensure your little ones can have the run of the house in total safety, you can rely on Merten socket-outlets with increased protection against accidental contact. After all, you can never be too careful! And fitting your house out with these socket-outlets the first time round will eliminate the need for unsightly, inconvenient retrofitting with protective plates.



### **SCHUKO® e.l.c.b.-protected socket-outlets**

The socket-outlet with integrated logic. It detects fault currents caused by faulty leads, moisture or defective appliances and immediately cuts off the power supply to the appliance, thus preventing serious hazards and electrical accidents. In new buildings, regulations mandate the use of integrated fault-current protection. Old buildings can be retrofitted with this socket-outlet, rendering them safe at little expense.



#### **SCHUKO® socket-outlets with surge protection**

Thunder and lightning are an impressive spectacle of nature. But if they come into contact with your electrical installation, things can quickly turn dramatic: You can lose valuable data on your PC, and expensive televisions and hi-fi systems can be damaged beyond repair. That's why you need socket-outlets with surge protection to safeguard your appliances and equipment from direct and indirect lightning strikes and voltage surges in your home's electrical wiring. You can even retrofit them hassle-free.



#### **SCHUKO® socket-outlets with hinged lid**

These socket-outlets provide the extra protection you need in the kitchen and bathroom because unfortunately, electrical installations aren't spared when it comes to splashing water or cooking spills. And because using a damp cloth to clean heavily soiled, open socket-outlets is more than just risky.



#### **Antenna and multimedia outlets**

Our antenna socket-outlets enable superior reception for radios and televisions and allow for quick and easy connection of all commercially available radio and television leads. We also offer just the right ports for your communications technology, including phone, fax, hi-fi speakers, and PC – in your preferred switch range design, of course.

## ATELIER-M CLASSIC AND MODERN COMBINED TO PERFECTION



Confident style: The popular ATELIER design is now available in System M. Thanks to the new interpretation of this range of frames, ATELIER-M now integrates the entire assortment of System M with more than 280 functions.



Active white,  
glossy

White, glossy



**ATELIER-M**  
Polar white, glossy, System M



## 1-M AS SLEEK AS IT IS VERSATILE



1-M emphasises the dynamic transition from frame to rocker. A time-tested design with new options and all the advantages of System M.



Active white, glossy



White, glossy



**1-M**  
Polar white, glossy, System M



## M-SMART SIMPLY BEAUTIFUL



Clean lines give M-SMART its timelessly elegant appearance. When it comes to design for living, M-SMART can meet the demands of anyone's tastes.



Polar white,  
classymatt



White, classy-  
matt



Active white,  
glossy



Polar white,  
glossy



White, glossy



**M-SMART**  
Polar white, classymatt, System M

## THE ROUND SWITCH DISTINCTIVE AND MINIMALIST



"Why do light switches need to be square? Do we need to account for this system concept developed in the 1960s in every case?"

Konstantin Grcic reflected on this and other design questions and came to the conclusion: A "round" breakout of the "square" system allows shape to indicate function. Now, this renowned German designer attributes "socket-outlet/power" to the square, while round means "switch".

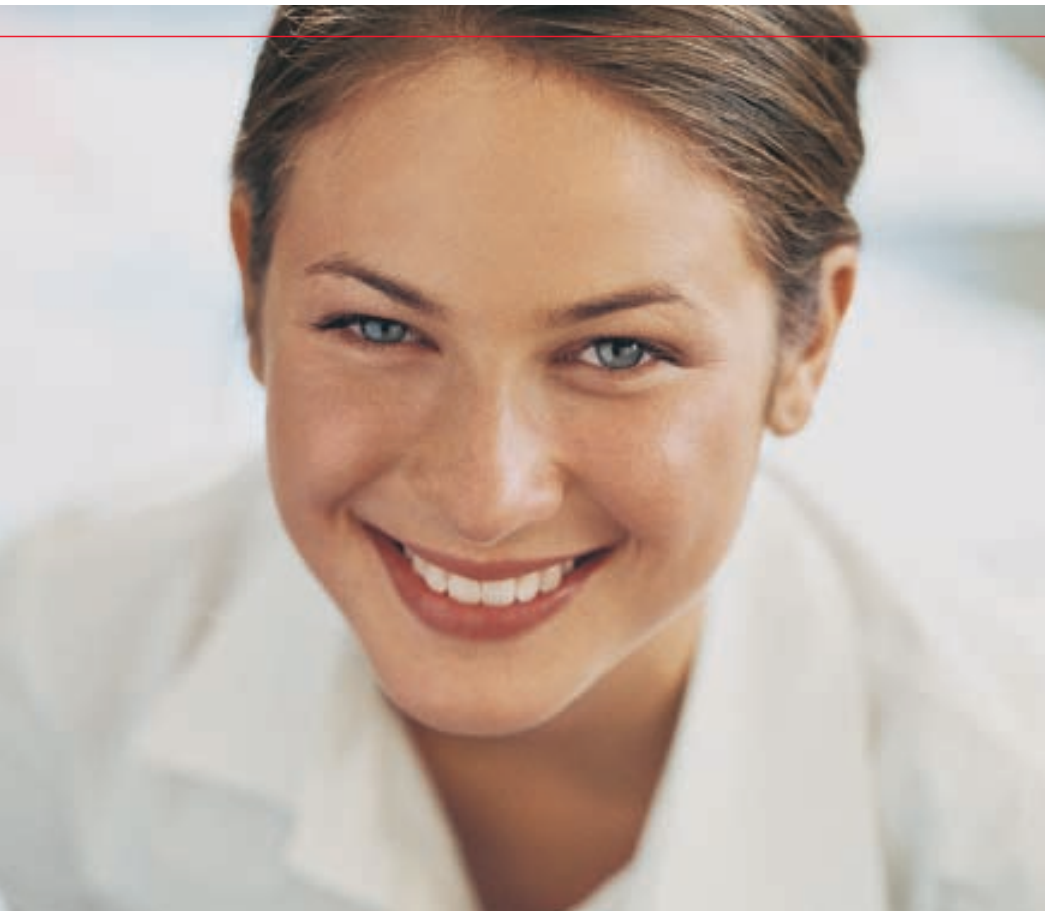


**The round switch**  
Polar white, glossy, System M



DESIGN PLUS

## M-ARC DYNAMIC AND ELEGANT DESIGN



The dynamic transition from rocker switch to frame gives the harmoniously curved M-ARC its individual character.



Anthracite



Anthracite/  
polar white



Sand/  
polar white



Polar white/  
anthracite



Aluminium  
colour



Midnight blue/  
aluminium colour



**M-ARC**  
Polar white classymatt, System M

## M-STAR A TOUCH OF ELEGANCE FOR EVERY WALL



M-STAR lends style and character to every room, with high-quality frame options in satin silver, chrome and polished brass.



Satin silver/  
anthracite



Polished brass/  
polar white



Chrome/  
anthracite



**M-STAR**  
Chrome, rocker polar white classymatt, System M

## M-PLAN SWITCHING IN ITS BEST FORM

M-PLAN has discovered the essence of good form – and doesn't need to shout about it. The ideal switch for anyone who is a fan of discrete design.



**M-PLAN**  
Polar white glossy, System M



**M-PLAN**  
Anthracite, System M



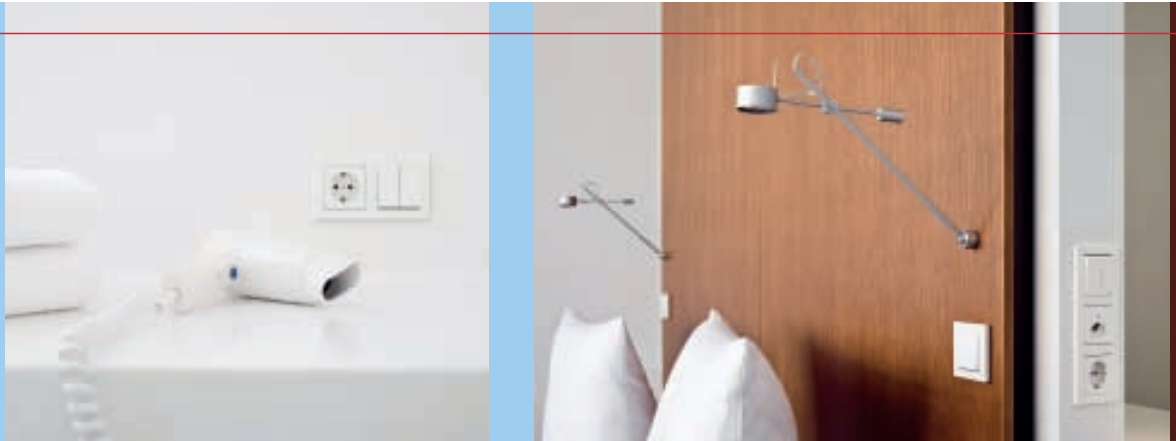
Active white  
glossy

Polar white  
classymatt

Anthracite

Aluminium  
colour

# M-PLAN II THE SUPER-SLIM SWITCH SERIES

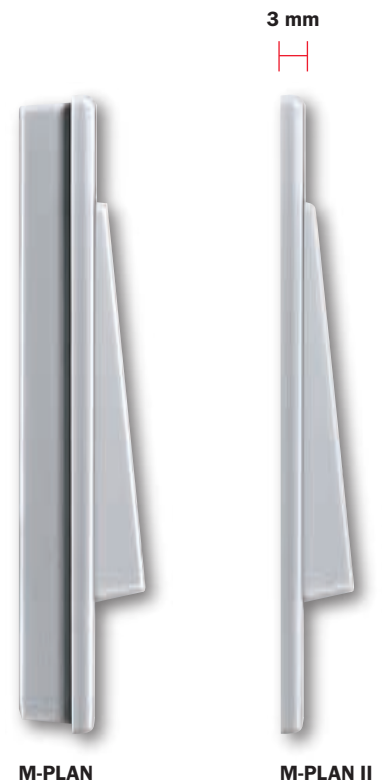


The integrated solution for modern architecture. All but 3 mm of the control interface is concealed in the wall. Using the flush-mounting adapter, up to 280 System M functions can be installed.

1-gang to 3-gang frames are available. The innovative and simple installation technology can be used for flush mounting in almost any type of wall.



**M-PLAN II**  
Aluminium colour, System M



## M-PLAN REAL GLASS | M-PLAN METALL SWITCHING IN ITS BEST FORM



Timeless, aesthetic, and high quality – the much-awarded M-PLAN series now comes in another design version: with real glass frames.



### M-PLAN with real glass frame

Brilliant white, rocker polar white glossy, System M



### M-PLAN with real glass frame

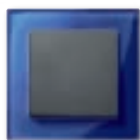
Onyx black, rocker polar white glossy, System M



Mahogany/  
polar white



Ruby/aluminium  
colour

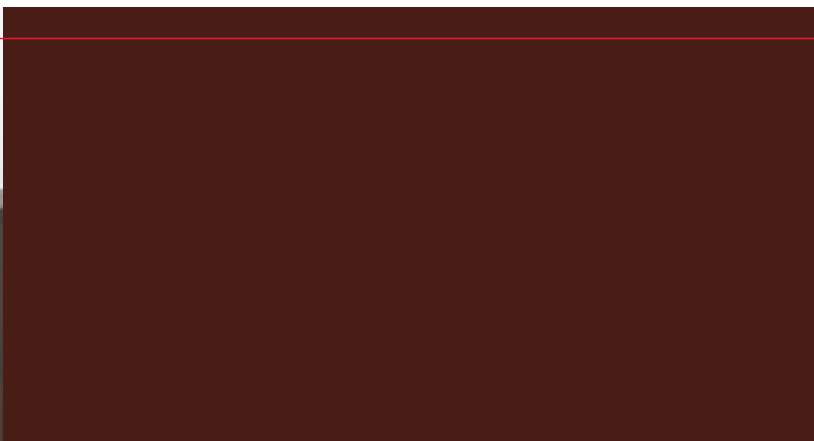


Sapphire/  
anthracite



Diamond/  
polar white





Its shape, its colour, and not least its material are what makes a product unique. With the new M-PLAN metal frames, you are making a clear commitment: to pure aesthetics and exclusive taste.



**M-PLAN with metal frame**  
Rhodium grey, rocker polar white glossy, System M



**M-PLAN with metal frame**  
Platin silver, rocker polar white glossy, System M



Chrome/  
polar white    Rhodium grey/  
polar white    Rhodium grey/  
anthracite    Platin silver/  
anthracite

**ARTEC**  
**THE FASCINATION**  
**OF CLEAN LINES**



Groundbreaking in form and design. The ARTEC is nowadays already a classic among surface switches. Its timeless appeal combines a clean use of form with a slimline appearance.



**ARTEC**  
Stainless steel, System Design



# TRACENT TRANSPARENCY OF FORM AND FUNCTION



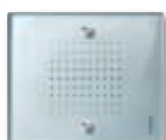
Switches can be beautiful. The lightest of touches on the glass surface is enough to dim the lights, switch them on and off or control the blinds. TRACENT – clear, flat, discreet, with an exposed glass surface and the possibility of integrating it in the intelligent KNX intelligent building technology. TRACENT can also be labelled individually.



**TRACENT**  
Satinated, System Design

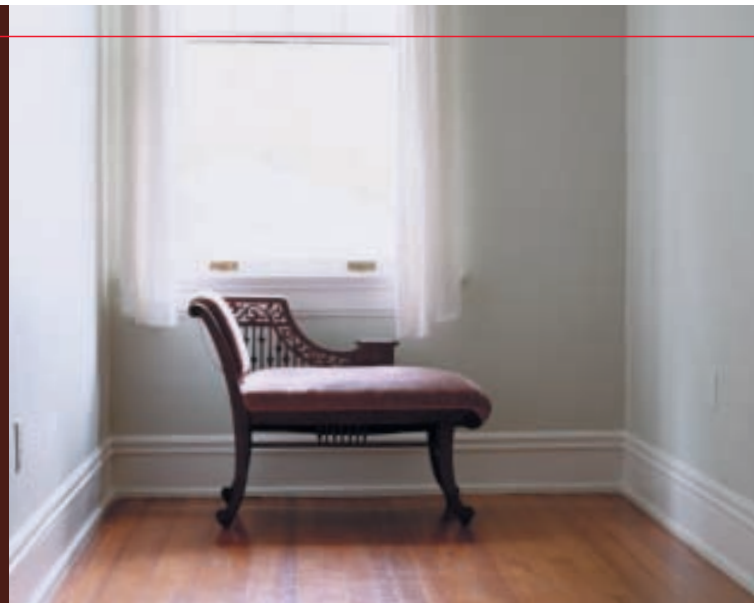


Satinated



Transparent

## ANTI-K THE STYLISH OPTION



This design program combines a range of functions using state-of-the-art switching technology from System Design with stylish elegance. Top-quality, co-ordinated material colours offer numerous

possibilities for the luxurious arrangement of your living space. An elaborate manufacturing process is necessary to create the elegant appearance of the ANTI-K brass elements.



**ANTI-K**  
Polished brass, rocker polar white, System Design



**ANTI-K**  
Antique brass, System Design



Polar white



White



Dark brazil



Antique brass/white

# AQUADESIGN WATERPROOF ON THE INSIDE, BEAUTIFUL ON THE OUTSIDE



The AQUADESIGN range proves at first sight that functional can also look good. Balanced proportions, a high-quality surface and an elegantly-shaped frame give the waterproof

switch range an individual look. AQUADESIGN is typically used in: professional kitchens, laundries and outdoor areas such as terraces for example.



## AQUADESIGN

Polar white



Polar white



White



Dark brazil



Aluminium colour



Anthracite



Focus Know-how  
Silber 2005

## ARGUS SMOKE DETECTOR SYSTEM

# 100 % MERTEN – 100 % SAFE



**ARGUS Basic smoke detector**  
Polar white



**ARGUS smoke detectors  
are VdS-certified**

Should every room have a smoke detector? Basically, yes. But there's a difference between minimum protection and optimum protection. The rule of thumb for minimum protection is one smoke detector in the corridor and bedrooms of every floor, each one mounted on the ceiling. Optimum protection based on the individual living situation is achieved by installing—and ideally networking—ARGUS smoke detectors from the cellar all the way to the top floor.

The life-saving advantages that smoke detectors offer have convinced seven German federal states to make smoke detectors compulsory in private living areas. With the newest generation of the approved ARGUS smoke detector system, Merten offers you uncompromising brand quality and a broad range of smoke detectors for different requirements. All ARGUS smoke detectors are VdS-certified for safety and security, with a flat design and attractive colour options.

### **ARGUS Basic smoke detector**

The ARGUS Basic smoke detector is an inexpensive individual retrofitting solution that is particularly well suited for flatlets and single-storey flats. This ARGUS smoke detector is available in two battery-operated versions: Basic, with a battery life of 3 years, and Longlife, with a battery life of up to 10 years.



### **ARGUS Connect smoke detector**

Aluminium

### **ARGUS Connect smoke detector**

The ARGUS Connect is the optimal system for retrofitting a single-family house. These battery-operated smoke detectors can be reliably interconnected – with up to 40 smoke detectors in a network. As soon as one smoke detector senses smoke, it sends a radio signal to the other smoke detectors, which all immediately sound the alarm.

### **ARGUS 230 V smoke detector**

The ARGUS 230 V smoke detector offers maximum safety from the cellar to the top floor and is particularly well suited for new buildings. Connected to a 230-volt cable, it is always alert. The integrated battery provides continued functional reliability in the event of a power failure.

### **A safety bonus**

Now Merten offers safety and security which extend even further, with the flush-mounted system relay for ARGUS smoke detectors. The system relay ensures that smoke alarms are forwarded to external signal sources such as sirens, flashlights or vibrating cushions via a make-contact. This occurs via radio or by connecting an additional core to the 230 V network.

An added safety bonus: The relay can also forward an alarm signal to KNX or to the Merten CONNECT radio system.

## ARGUS MOVEMENT DETECTOR | ARGUS PRESENCE DETECTOR



ARGUS surface-mounted movement detectors have a lot going for them. Not only do they provide adequate lighting in areas far removed from a light switch, they also put uninvited guests into the spotlight – whether they want to be or not.



Polar white



Dark brazil



**ARGUS movement detector 220**

Aluminium colour



Designpreis der  
Bundesrepublik  
Deutschland  
Nominiert 2004

DESIGN PLUS



# FOR COMFORT AND SAFETY AT EVERY TURN



Never get left in the dark again. The light automatically switches on when a person comes within the area of detection of the ARGUS indoor movement detector. This doesn't just mean more comfort and safety. It also saves energy, particularly in hallways, lobbies, staircases, cellar corridors, and infrequently used rooms.



**ARGUS indoor movement detector**  
180 / 2.20 m flush-mounted, aluminium colour, System M



**ARGUS indoor movement detector**  
Stainless steel, System Design

Increasing energy costs and growing awareness of the environment in modern buildings management now mean that more innovative solutions for efficient energy use are required than ever before. You can count on ARGUS presence detectors from Merten. This is because they control the lighting, heating or ventilation in individual rooms according to need.



**KNX ARGUS Presence**  
Aluminium colour



Polar white



**KNX ARGUS Presence**  
180/2.20 m flush-mounted, polar white, System M

# TWINBUS VIDEO INTERCOM VISIBLY MORE COMFORT AND SECURITY



## Functionality in its most beautiful form

Are comfort and security high on your list of priorities when receiving guests? Preferably with sound and images for perfect control? And does sophisticated design also rank high on your list? Then the perfect solution for you is the new TwinBus video intercom from Merten, with its many benefits for you to enjoy:

- TwinBus Technology
- Attractive look, coordinated System M switch design in 42 System M colour and frame options
- Excellent sound and picture quality
- Versatile functions
- Easy operation

## Everything at a glance

An extra measure of security: On the brilliant 2.0" colour TFT display, you can see at a glance who is ringing, without even opening the door. In addition, if your door station has an electronically adjustable camera module, the video intercom even allows you to set an angle of detection of up to 130 degrees. That means a significantly wider field of view – for maximum security.



Can be integrated in 42 System M colour and frame options

8 call tones incl. 3-tone gong

Different sounds for calls from entrance/floors/internal

Choice of menu language, German/English

Brilliant 2.0" colour TFT

22-level custom controller for brightness, colour and contrast

Cursor keys for camera selection, internal call or switching, brightness settings, etc.

Special functions: switch on outside light, select camera, door opener for drive or garage door

Accept and end call function

Door opening key

Call switch-off with visual display and staircase lighting

Microphone for excellent voice quality

### M-PLAN

Polar white, glossy, System M

# TWINBUS INTERCOM

## SECURITY YOU CAN HEAR



### Attractive in form and function

One quick question and you know whether you've got welcome visitors or uninvited guests at your door. The new TwinBus intercom in the timeless System M switch design is the ideal solution. With its extremely slender housing and unparalleled variety of colour and frame options, it's sure to meet all your design requirements. And the TwinBus intercom requires no handset, so you'll always have a free hand. Additional features that speak for greater comfort and security:

- Excellent voice quality
- Large function keys
- Easy-to-read labelling field
- Easy operation



TwinBus flush-mounted intercom for 42 System M colour and frame options

Loudspeaker for excellent voice reproduction

5 melodic call tones

Accept and end call function

4-stage volume control

Door opening key

Call switch-off with visual display and staircase lighting

Microphone for excellent voice quality

### M-PLAN

Polar white, glossy, System M

### System M sample colour and frame options



**ATELIER-M**  
Polar white



**M-STAR**  
Satin silver



**M-PLAN Glass**  
Onyx black



**M-PLAN Glass**  
Diamond silver



**M-PLAN Metal**  
Chrome



**M-PLAN Metal**  
Rhodium grey

**KNX**

## **IQ FOR YOUR BUILDING**



Imagine being able to check your building monitoring system, messages and camera images from an Internet café while on holiday. Imagine being able to make sure that no lights or electrical appliances are still switched on when you leave home, at the touch of a button. Imagine falling into your favourite armchair at the end of a hard day's work, and setting all the lights just the way you like them at the touch of a single button. Imagine

being able to light up your whole house at the touch of a button if you hear suspicious noises in the night. Just a few of the many possibilities offered by intelligent building technology from Merten. In conventional buildings, this would only be possible with a great deal of effort. Now, all it takes is a flick of the wrist. Whether in domestic or commercial areas, Merten technology makes your walls intelligent and simplifies your life and work.

## **INFORMATIVE & PRACTICAL YOUR MERTEN CD**

Would you like to see more examples of how KNX can help make your life and work more secure, comfortable, flexible and efficient?

The Merten CD has many practical examples for hotels, schools and hospitals. Beyond

this, you can find extensive checklists for your planning and details about Merten's intelligent KNX push-buttons.

And if the CD is not enough – you can find everything on-line at: [www.mymerten.com](http://www.mymerten.com)



**Free: You can either order the Merten CD at [www.mymerten.com](http://www.mymerten.com) or access it directly under the same link.**

## MULTI-FUNCTION PUSH-BUTTON WITH ROOM TEMPERATURE CONTROL UNIT THE CONVENIENT WAY TO SAVE



The extremely flat multi-functional push-button with integrated room temperature control unit is available in the design ranges System M and System Design in 2 versions: 2-gang and 4-gang push-buttons.

Only one control unit is now required for controlling the heating system and functions like light and blinds instead of the two control units which used to be required.

It's so easy and convenient to save energy and installation costs with KNX.



Polar white



Anthracite



Stainless steel



Polar white



**M-PLAN**

Aluminium colour, System M



**ARTEC**

Aluminium colour, System Design

## APPLICATION EXAMPLES – PRIVATE HOME

# LIVING THE GOOD LIFE



### Intelligent blind control:

- Central control of the electrically operated blinds and shutters in the study, parents' bedroom and children's room at the press of a button.

### Comprehensive messages:

- If windows and doors are left open, a warning is shown on the information display at the entrance door.

### Individual lighting control:

- The "Central Off" switch at the front door deactivates all loads, such as the lighting or appliances connected to socket-outlets.

### Timed heating control:

- Pleasant room temperatures are ensured by individual temperature control for each room.

### Flexible building management:

- All the building technology can be controlled from home or while you are away.

## APPLICATION EXAMPLES – OFFICE WORKING MADE EASY



### Intelligent blind control:

- Automatic control of the awnings via light sensors in accordance with the current sunlight intensity.

### Energy-saving heating control:

- Room heating depending on the presence of a person in a room as well as the immediate closure of the heating valve when a window is opened.

### Flexible building management:

- Flexible adaptation of the building functions when rooms are to be used for different purposes.
- Display of fault signals and automatic forwarding of these signals to the responsible electrician or the building manager.

### Automatic lighting control:

- Daylight-dependent adaptation of the lighting for optimum working conditions through light control. Up to 30% possible energy savings through the use of intelligent heating control!

## MERTEN@HOME ALWAYS AT HOME, WHEREVER YOU ARE



Merten doesn't just make your home and business life simpler and more comfortable. It also makes it more mobile. With the merten@home user interface for the control of all building management functions. It can be operated intuitively and enables the convenient control of private homes, holiday homes or commercial properties via PDA, Smartphone, Touch-Panel or PC. And you don't have to be at home to do so. merten@home gives users global mobility.

The clearly structured user interface offers three convenient access options for functional control: room-, function- or program-oriented. Your benefit: you can control, set and display all building management functions conveniently and directly, with just a few clicks. If only everything in life were so simple!

The online demonstration at [www.mertenathome.com](http://www.mertenathome.com) shows how simple navigation with merten@home can be.



**merten@home**  
via Smartphone

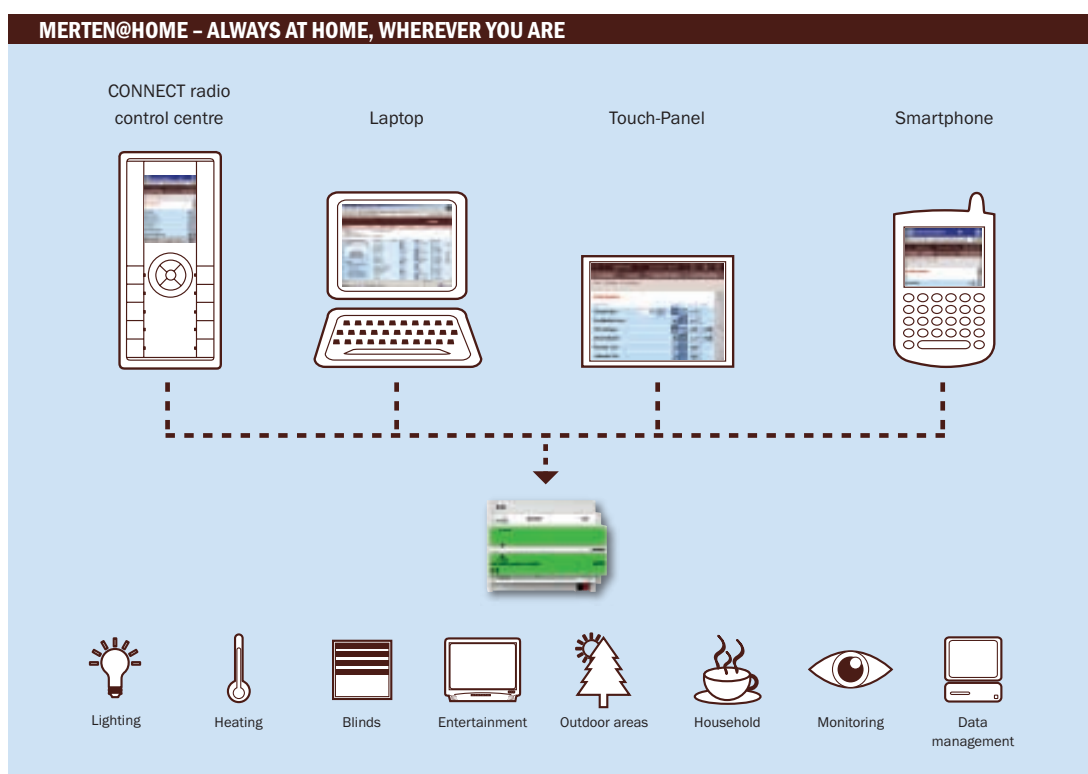






Imagine a better life:

- Your business trip finishes early and you raise the underfloor heating to a comfortable temperature at the W-LAN hotspot at the airport. By PDA.
- You use your IP Touch-Panel 10" to close the window and switch off the light in the living room. While lying in bed.
- Popping into an Internet café on holiday, you check your building monitoring system, related messages and camera images. Great - everything is in order.
- You view consumption data such as electricity consumption from your laptop.



## CONNECT RADIO SYSTEM



Can an electrical installation be adapted to new requirements? Without having to tear open walls and lay new cables? It's possible with the new CONNECT radio system. Because it offers everything that the perfect radio system should offer: simple installation – and the decisive factor: absolutely reliable connections.

Thanks to state-of-the-art re-routing technology, this new radio system automatically searches for the best pathway to the receiver and continually checks whether the receiver has received the radio signal. If not, the signal is routed via another receiver.

Regardless of whether you want to activate lighting or lightscenes, operate roller shutters or control room temperature, or whether you're controlling a wide range of multimedia applications – the CONNECT radio system offers a multitude of application possibilities, making it the perfect solution for your renovation.

Now just imagine you could control all of this with a single remote control – Merten makes it happen with the new CONNECT radio universal remote control. Its attractive design is impressive and it combines two kinds of technology in one device: infrared and radio. With it, up to five AV devices or all Merten IR

components can be controlled via infrared. At the same time, it allows you to operate Merten CONNECT system devices. The remote control can also be used to teach and program various radio applications.

## SIMPLE AND INTELLIGENT – FOR ABSOLUTELY RELIABLE CONNECTIONS



**CONNECT radio central unit**  
Aluminium



**CONNECT radio push-button**  
1-gang, polar white, System Design



**CONNECT radio push-button, Move,**  
With wall bracket, polar white,  
System Design

# PRODUCT OVERVIEW

## TAKE YOUR PICK

### SYSTEM M

M-SMART Duroplastic	M-SMART Thermoplastic brilliant	M-SMART Thermoplastic classymatt	M-ARC	M-STAR
------------------------	------------------------------------	-------------------------------------	-------	--------



Polar white



Active white



Polar white



Polar white



Polished brass/polar white



White



Polar white



White



White



Chrome/polar white



White



Polar white/aluminium colour



Aluminium colour



Chrome/anthracite



Polar white/anthracite



Anthracite



Satin silver/white



Midnight blue/aluminium colour



Satin silver/anthracite

The colours illustrated may vary slightly from the product colours due to the printing process.



**SYSTEM M**

1-M / ATELIER-M	M-PLAN with real glass frame	M-PLAN/M-PLAN II	M-PLAN with metal frame
-----------------	---------------------------------	------------------	----------------------------



1-M/Active white



Brilliant white/polar white  
Rocker made of extra-glossy thermoplastic brilliant



Ruby/polar white



Polar white  
Thermoplastic brilliant



Rhodium grey/polar white  
Rocker made of extra-glossy thermoplastic brilliant



1-M/Polar white



Onyx black/polar white  
Rocker made of extra-glossy thermoplastic brilliant



Ruby/aluminium colour



Polar white



Chrome/polar white  
Rocker made of extra-glossy thermoplastic brilliant



1-M/White \*



Diamond/polar white  
Rocker made of extra-glossy thermoplastic brilliant



Sapphire/polar white



White



Platin silver/anthracite



ATELIER-M/Active white



Diamond/aluminium colour



Sapphire/white  
Rocker made of high gloss thermoplastic brilliant



Aluminium colour



ATELIER-M/Polar white



Mahogany/polar white



Anthracite

\* ATELIER-M also available in White

# PRODUCT OVERVIEW

## SCOPE FOR INDIVIDUAL CREATIVITY

SYSTEM DESIGN				OCTOCOLOR
ARTEC		ANTI-K	TRANCENT	OCTOCOLOR
				
Polar white	Aluminium colour	Polar white	Transparent	Polar white/chrome
				
White	Aluminium colour/black grey	White	Satinated	White/Gold
				
Light grey	Stainless steel	Dark brazil	Satinated	Titanium/chrome
				
Black grey		Antique brass	Aluminium colour	Bronze metallic/gold
				
Dark brazil		Polished brass/polar white		

**AQUADESIGN** | **ARGUS**

**AQUADESIGN** | **Movement detectors** | **Smoke detectors/ Presence detectors**



Polar white



White



Aluminium colour



Anthracite



Dark brazil



Polar white



Dark brazil



Aluminium colour



Polar white



Aluminium colour



Polar white



Aluminium colour



The colours illustrated may vary slightly from the product colours due to the printing process.

**SWITCHES DESIGNED FOR FUNCTIONAL VERSATILITY**

**Sample: KNX multi-function push-buttons** | **Sample: System M intercoms**



M-PLAN, Aluminium colour



M-PLAN, Aluminium colour



ARTEC, Aluminium colour



ARTEC, Aluminium colour



M-PLAN, Polar white Thermoplastic brilliant



M-PLAN, Polar white Thermoplastic brilliant



M-PLAN, Polar white Thermoplastic brilliant

***merten***

**Merten GmbH**  
P.O. Box 100653  
D-51606 Gummersbach, Germany  
Tel. +49 2261 702-203  
Fax +49 2261 702-328  
export@merten.de  
**www.merten.com**

